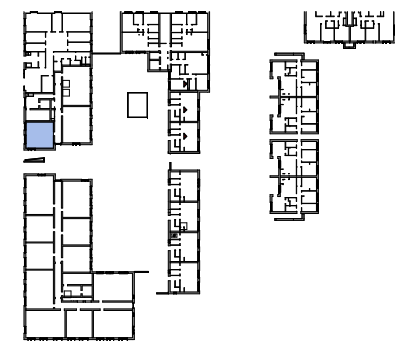
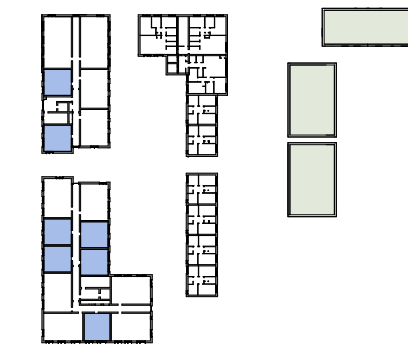


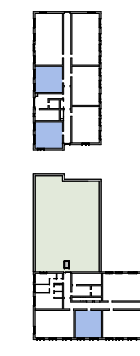
1B2P - Type 2A
1 : 100



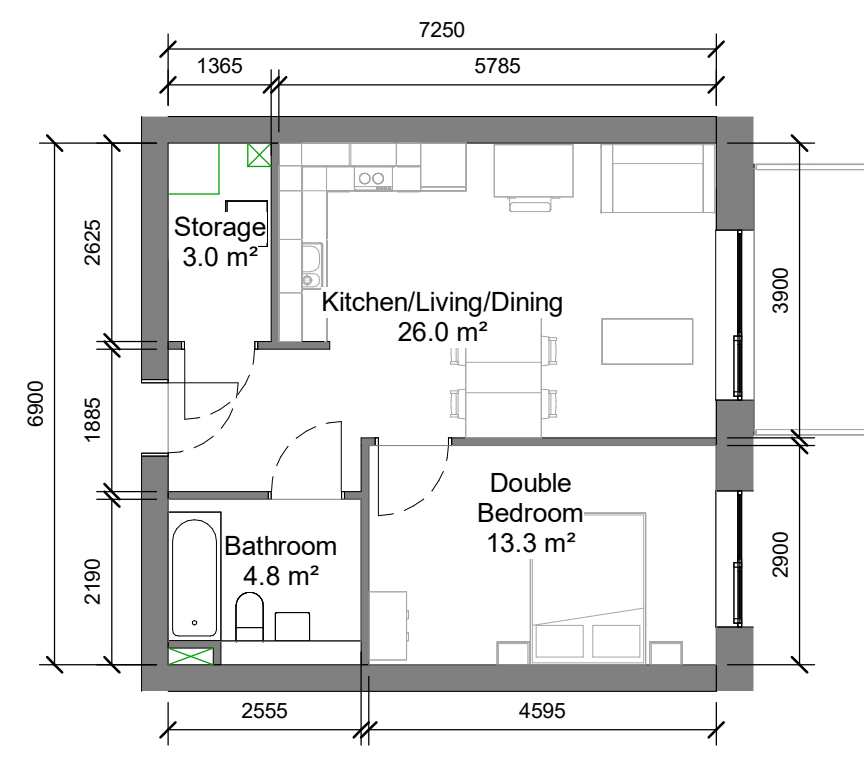
L00
1 : 2000



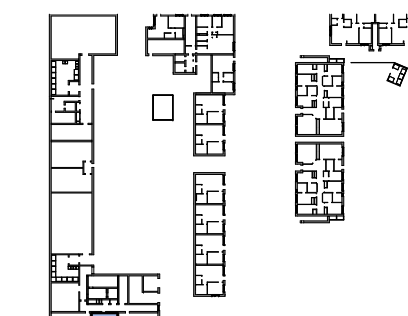
L01-L02
1 : 2000



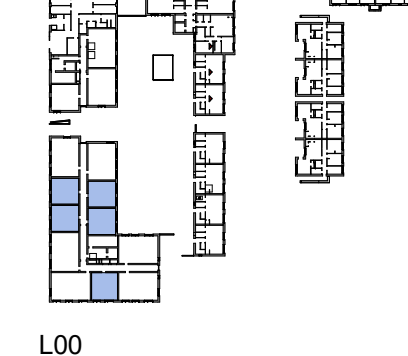
L03-L04
1 : 2000



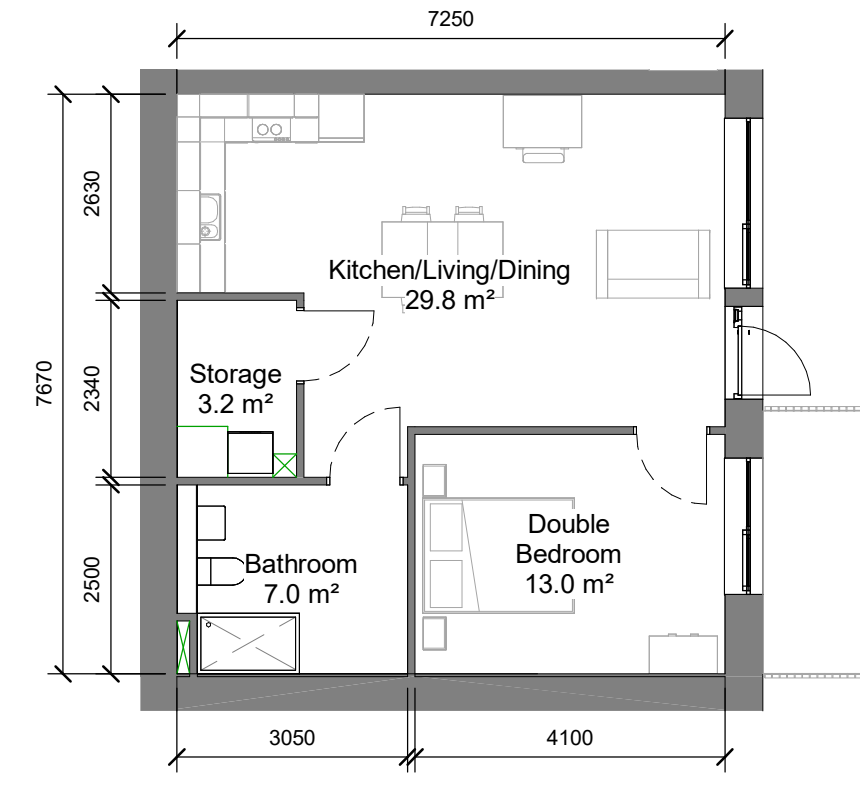
1B2P - Type 2B
1 : 100



LB1
1 : 2000



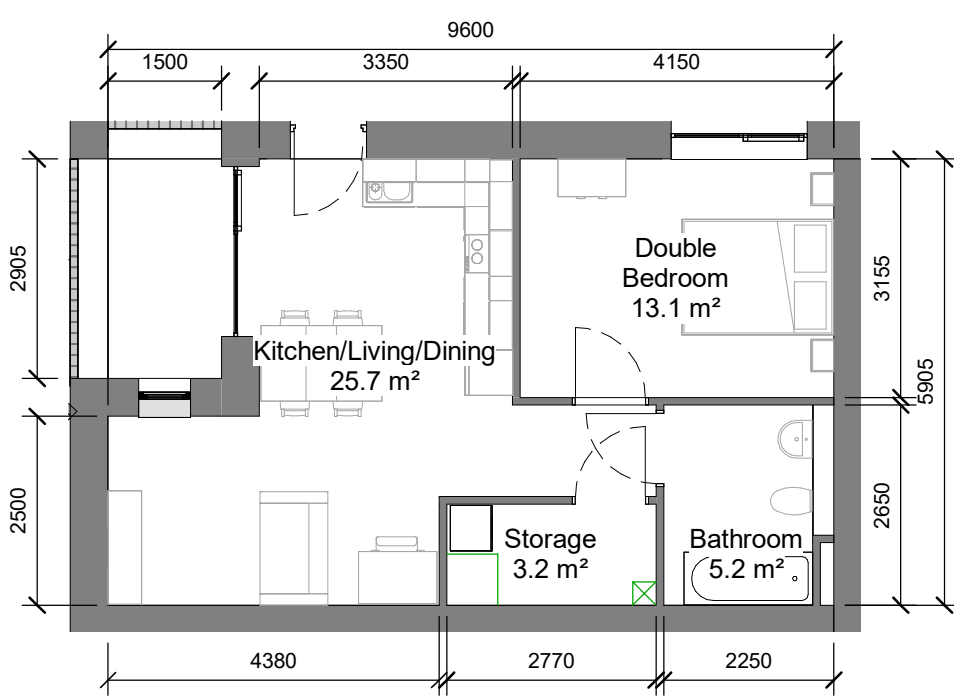
L00
1 : 2000



1B2P - Type 2C
1 : 100



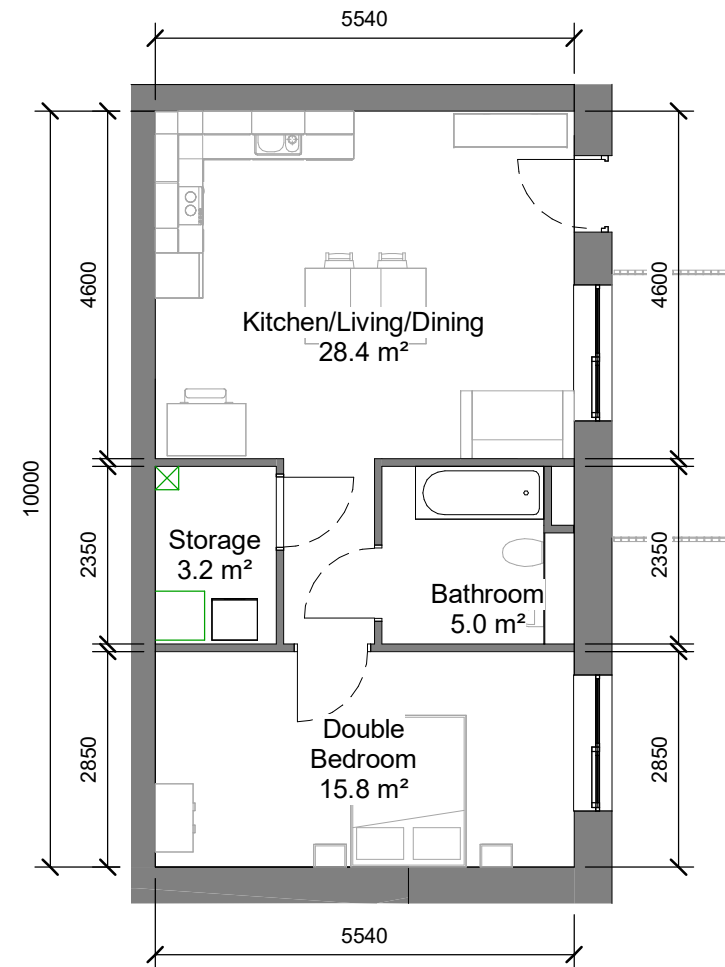
LB1
1 : 2000



1B2P - Type 2D
1 : 100



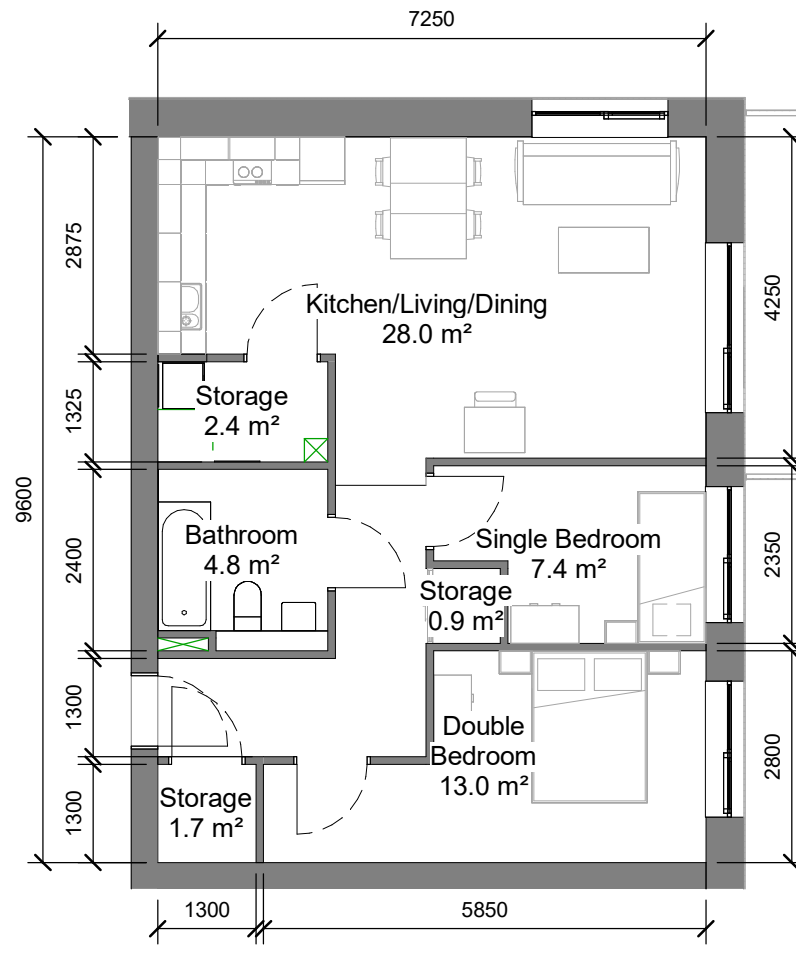
LB1
1 : 2000



1B2P - Type 2E
1 : 100



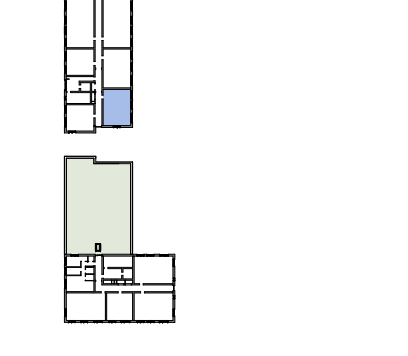
LB1
1 : 2000



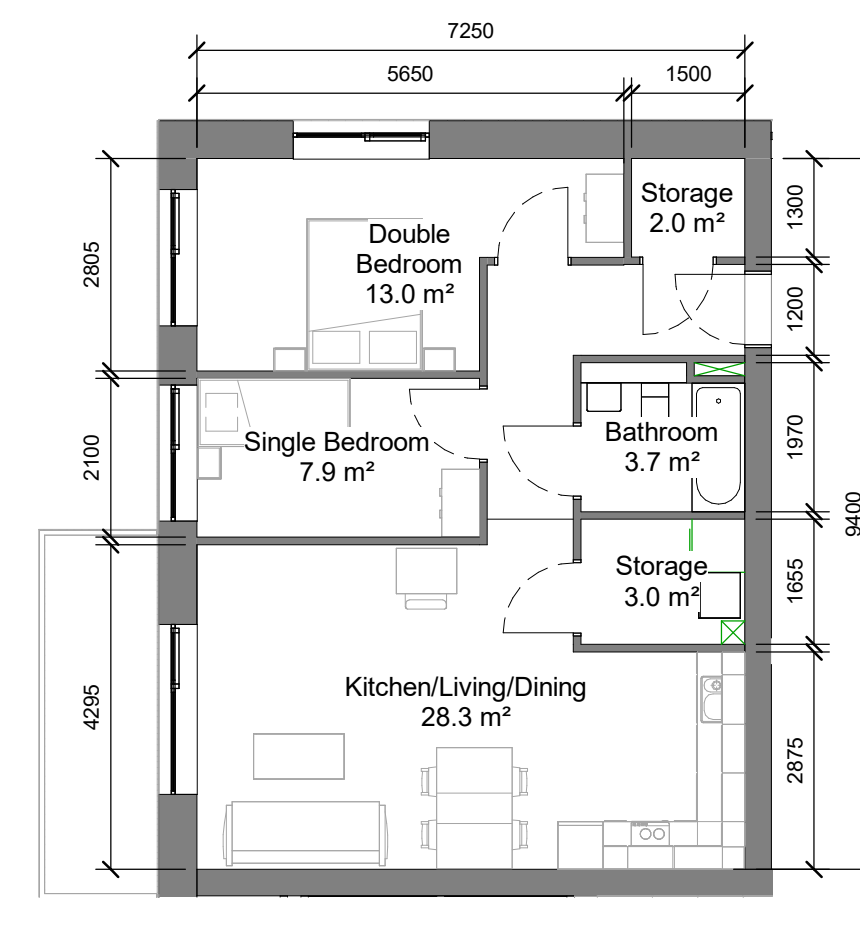
2B3P - Type 3B
1 : 100



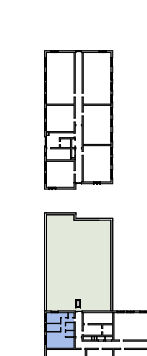
L00-L02
1 : 2000



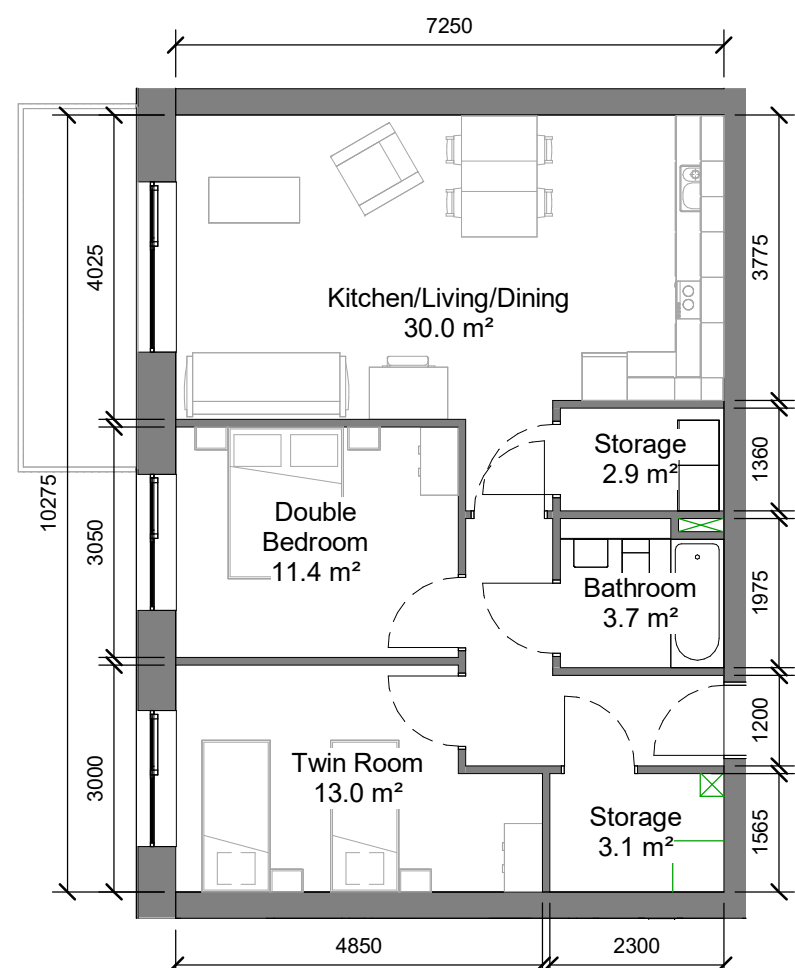
L03-L04
1 : 2000



2B3P - Type 3B1
1 : 100



L03-L04
1 : 2000



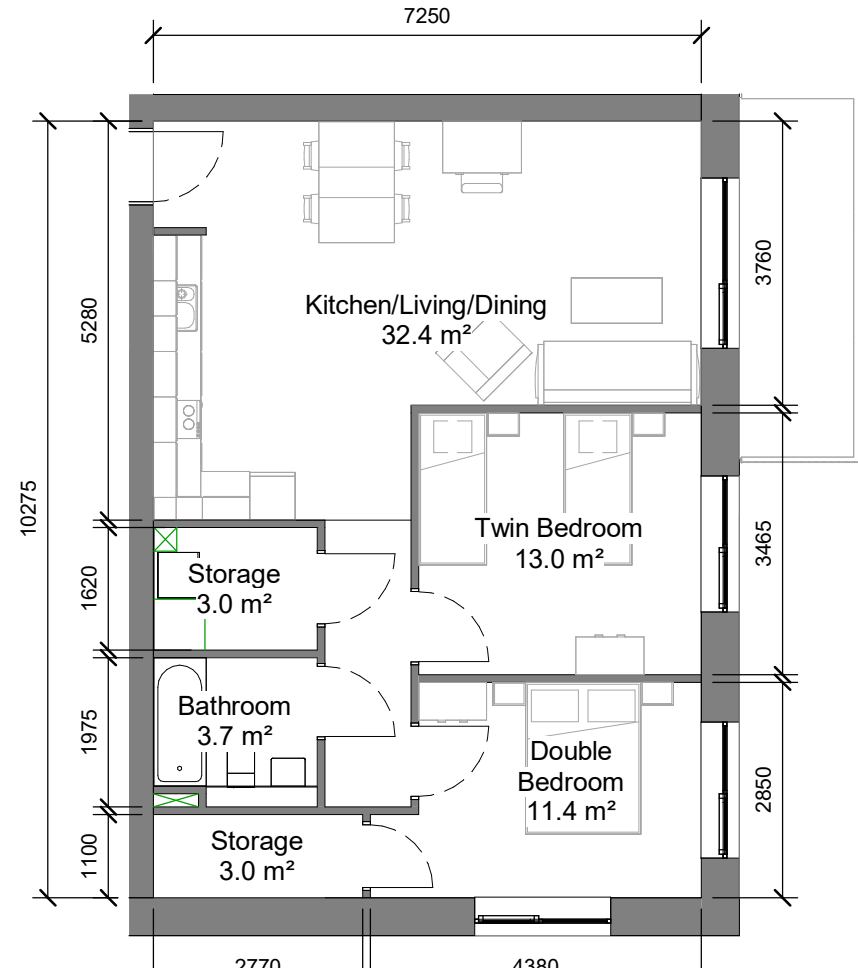
2B4P - Type 4B
1 : 100



LB1
1 : 2000



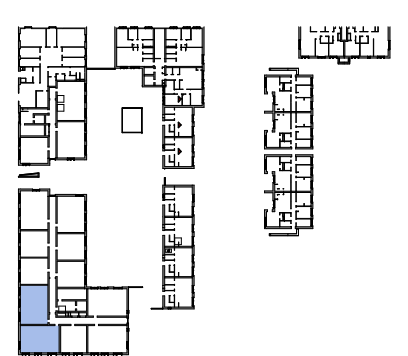
L00-L02
1 : 2000



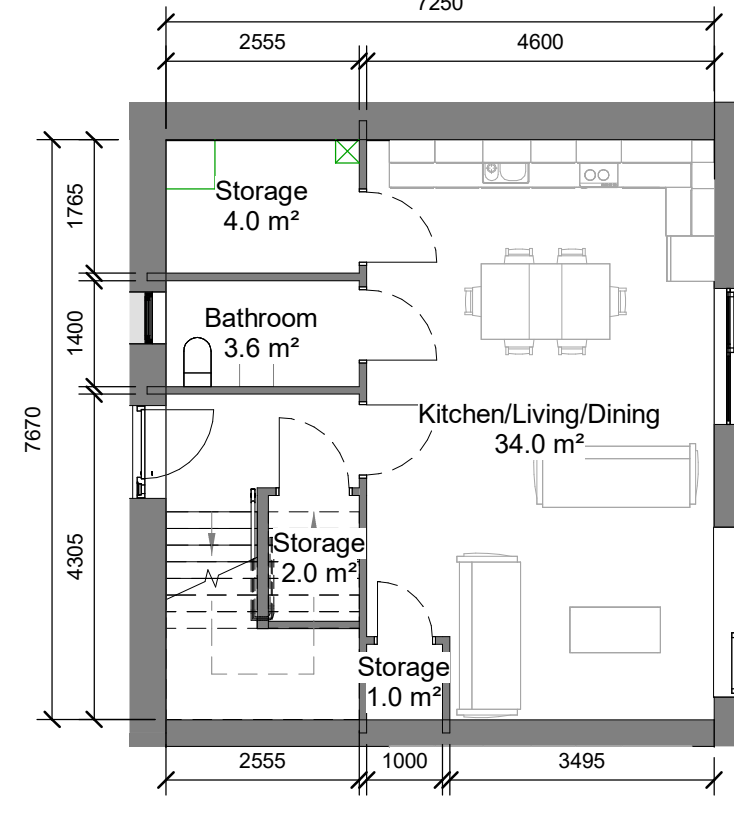
2B4P - Type 4C
1 : 100



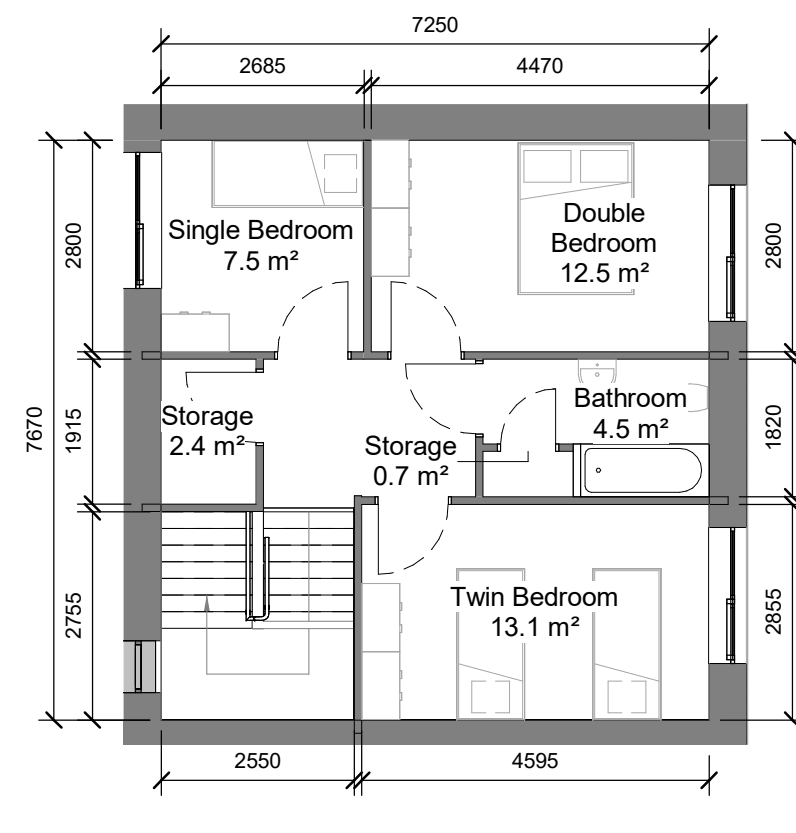
LB1
1 : 2000



L00-L02
1 : 2000



3B5P (Duplex) - Lower Floor
1 : 100

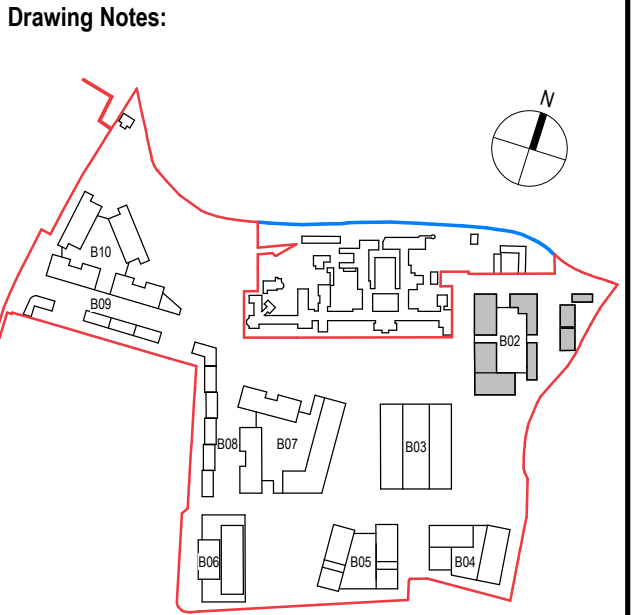


3B5P (Duplex) - Upper Floor
1 : 100



L00-L01
1 : 2000

Notes:
- Do not scale from this drawing. Use figured dimensions in all cases.
- Verify dimensions on site and report any discrepancies to the Architect immediately.
- This drawing is to be read in conjunction with the Architect's Specification.
- © This drawing is copyright and may only be reproduced with the Architect's permission.



P3 S-1	Sept 2024	KP	Part 10 Planning Application
Rev.	Date	Drawn	Details of Issue / Revision
Issues & Revisions			



Applicant Details:
Dún Laoghaire-Rathdown County Council

Agent Details:
Land Development Agency

Project Details:
**Proposed Part 10 Residential Development,
Dundrum Central Development,
Dundrum Road,
Dublin 14**

Drawing Title:
Block 02, Typologies 01

Job No.	Sheet Size:	Scale @A1:
P19-233D	A1_Landscape	As indicated
Issue Date:	Drawn By:	Reviewed By:
Sept 2024	K. Potocka	R. Quinn

Status	Purpose of Issue
P3	Part 10 Planning Application

Project - System - Spatial Zone - Level - Type - Originator - Role - Number	Revision
DCD-02-B02-ZZZ-DR-RAU-AR-1221	P3 S-1