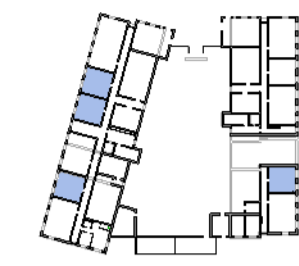
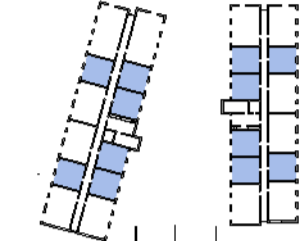


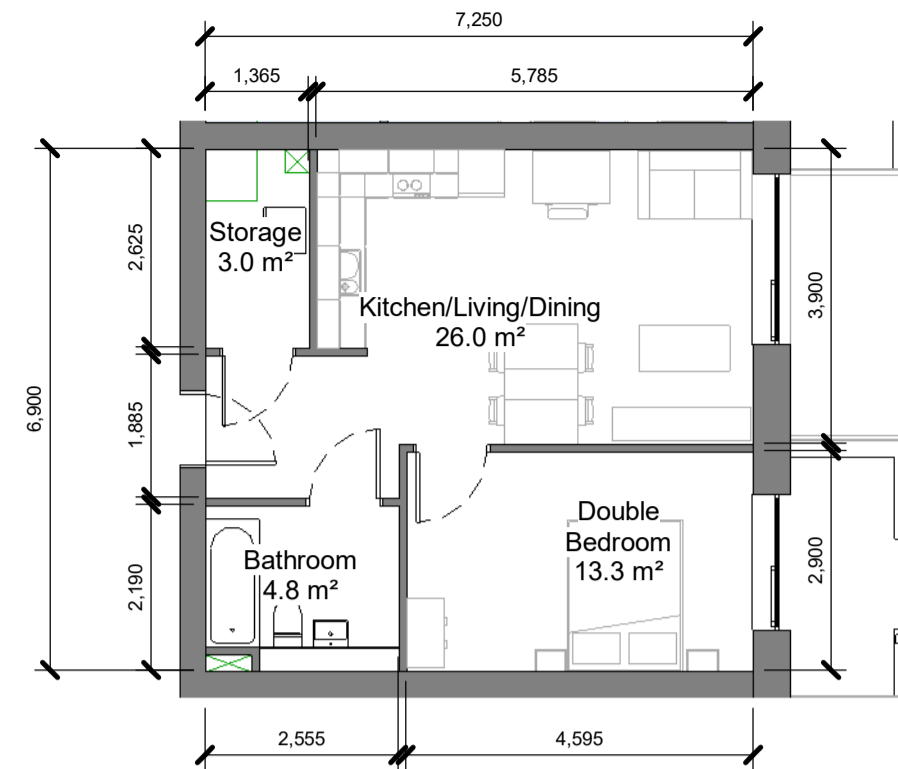
1B2P - Type 2A
1 : 100



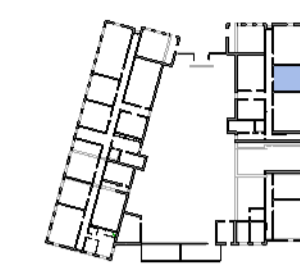
L00
1 : 2000



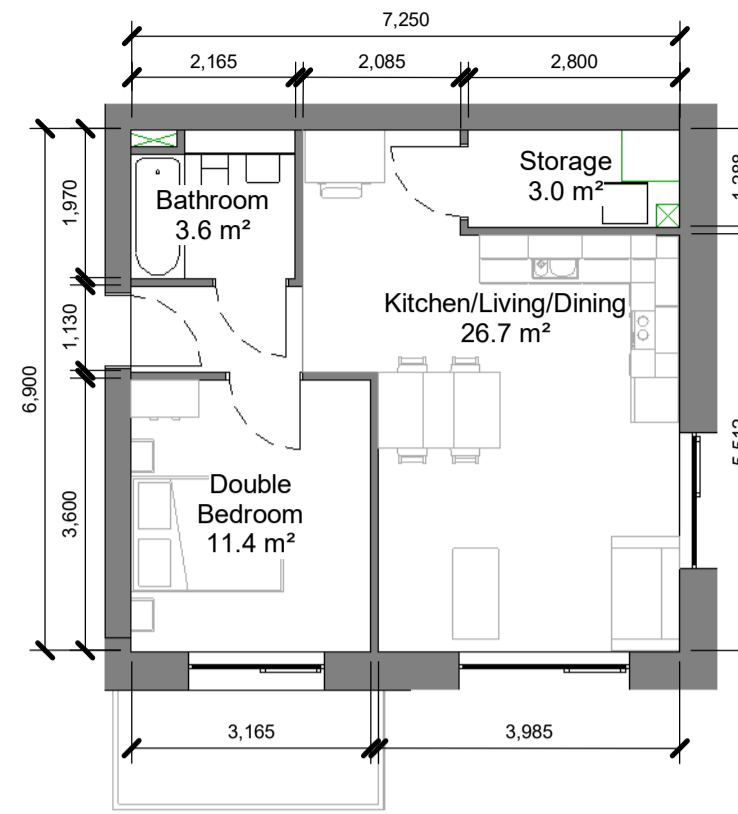
L01-L05
1 : 2000



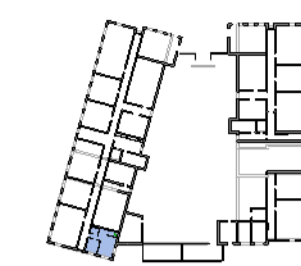
1B2P Type 2B
1 : 100



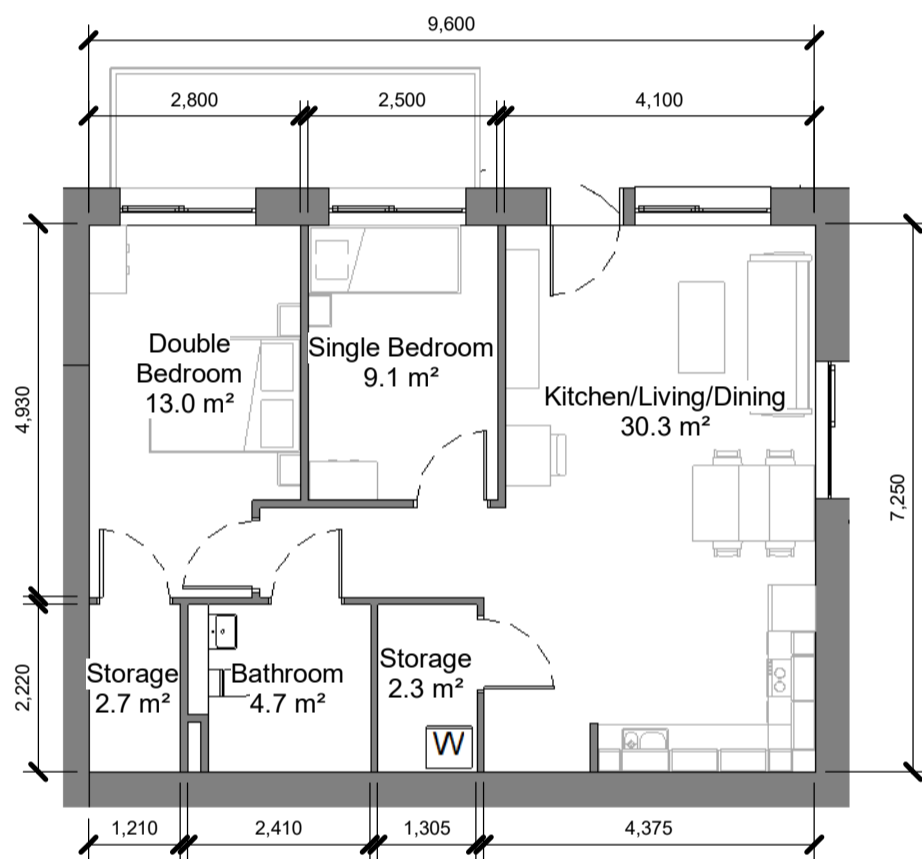
L00
1 : 2000



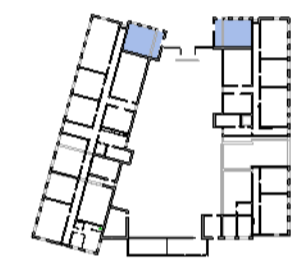
1B2P - Type 2F
1 : 100



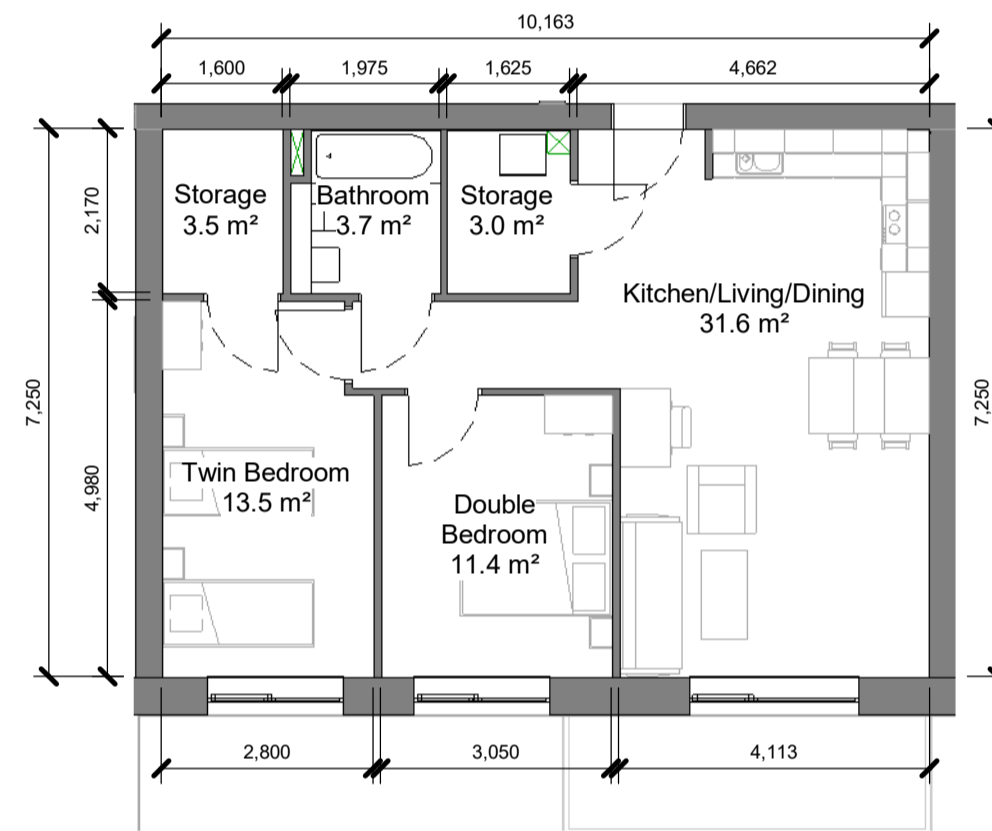
L00
1 : 2000



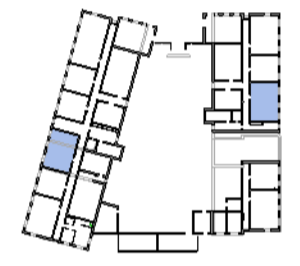
2B3P Type 3A
1 : 100



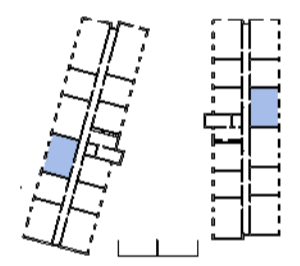
L00
1 : 2000



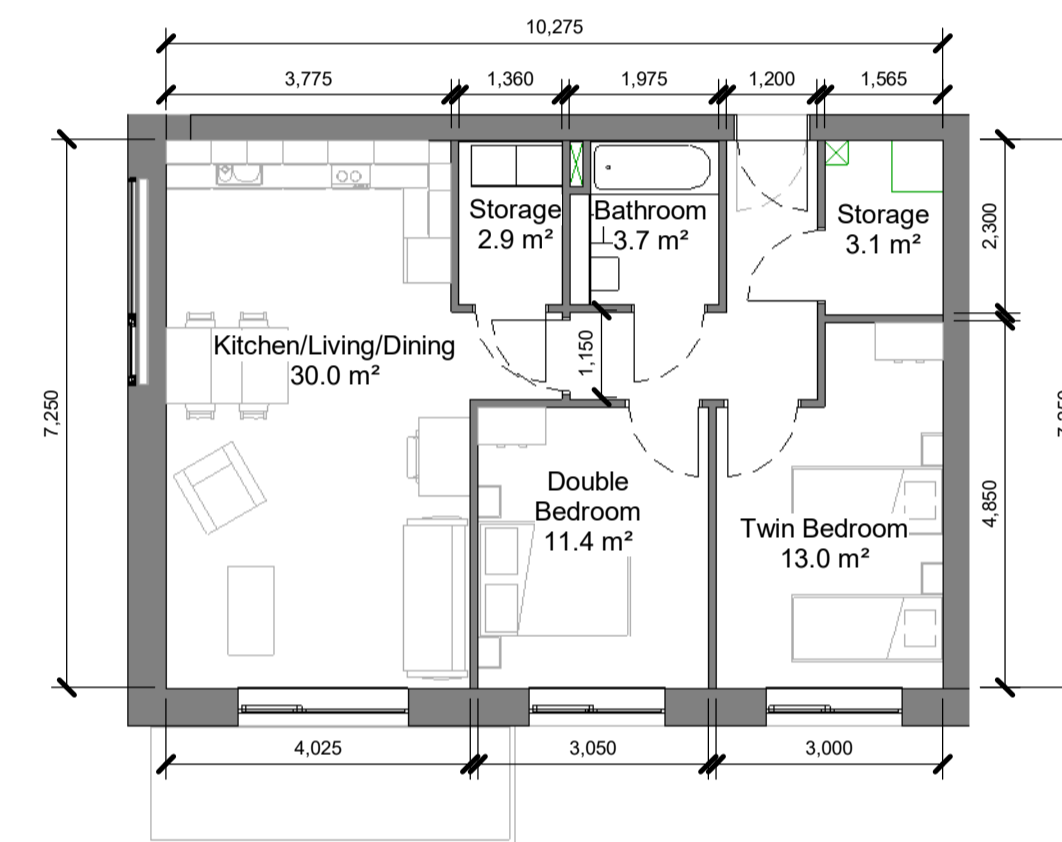
2B4P Type 4A
1 : 100



L00
1 : 2000



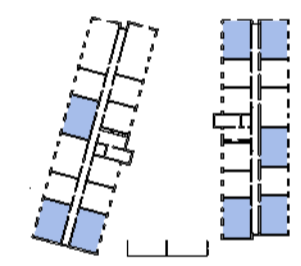
L01-L05
1 : 2000



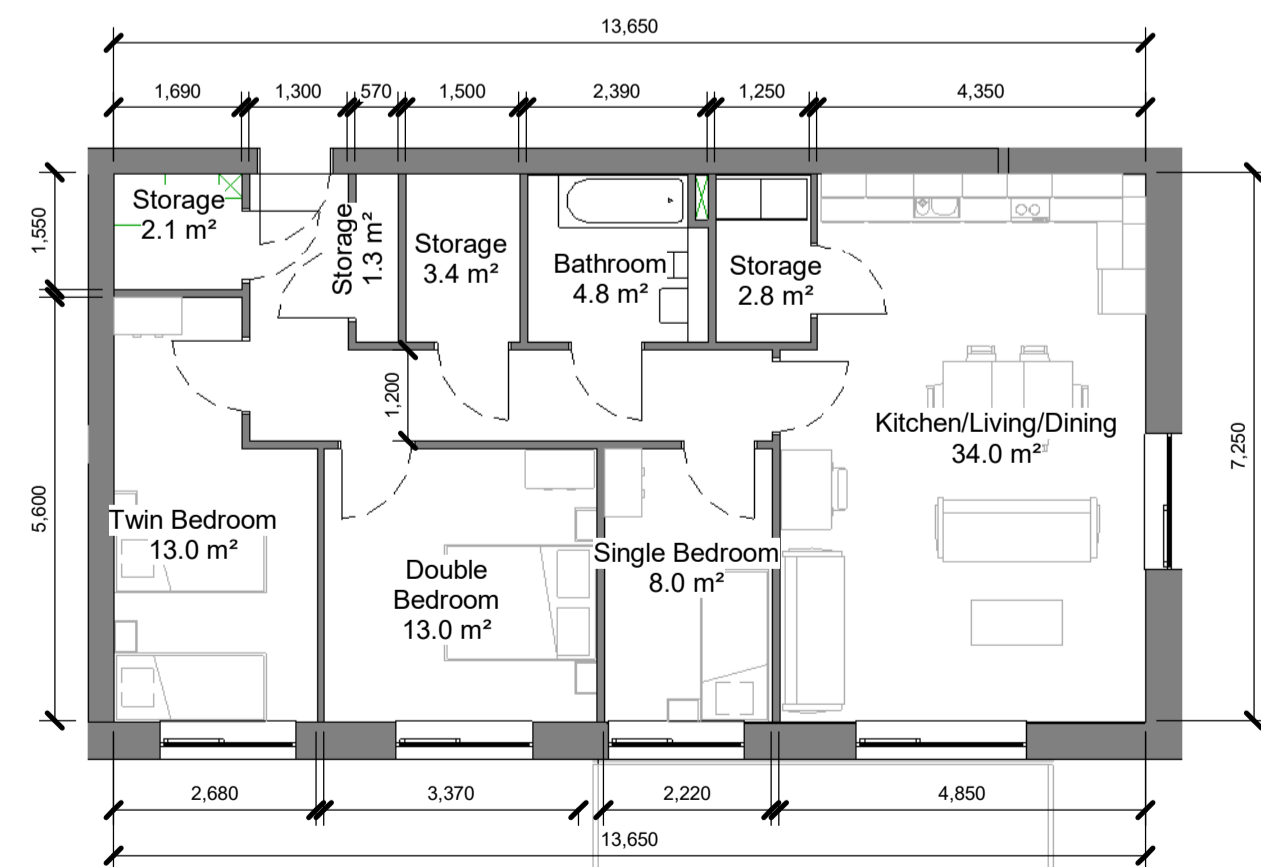
2B4P Type 4B
1 : 100



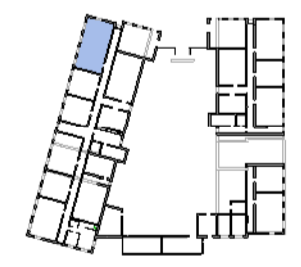
L00
1 : 2000



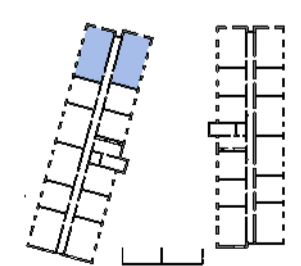
L01-L05
1 : 2000



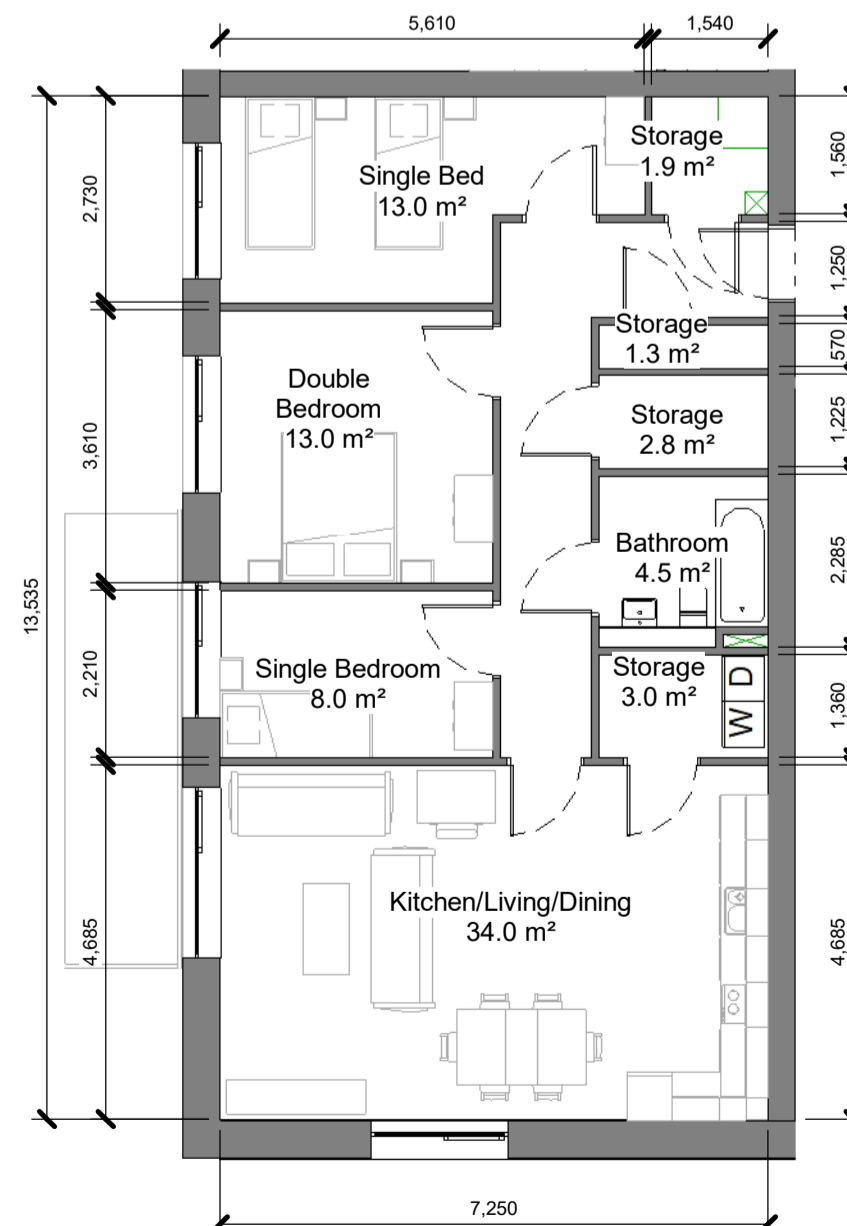
3B5P Type 5A
1 : 100



L00
1 : 2000



L01-L05
1 : 2000



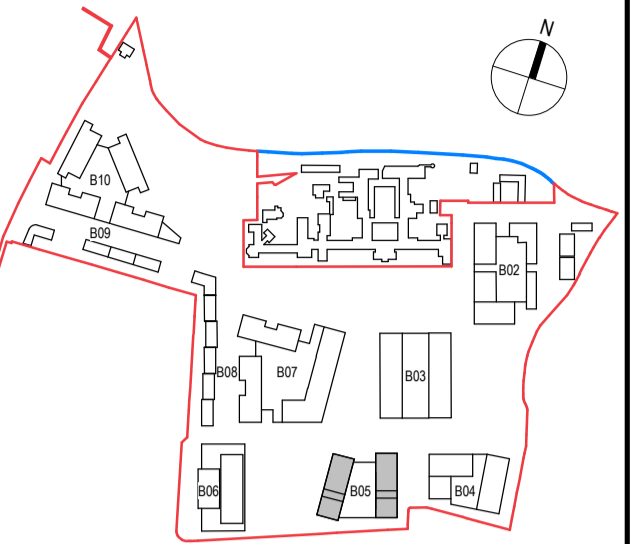
3B5P Type 5A1
1 : 100



B5_L05 - Key Plan
1 : 2000

Notes:
- Do not scale from this drawing. Use figured dimensions in all cases.
- Verify dimensions on site and report any discrepancies to the Architect immediately.
- This drawing is to be read in conjunction with the Architect's Specification.
- © This drawing is copyright and may only be reproduced with the Architect's permission.

Drawing Notes:



Rev.	Date	Drawn	Details of Issue / Revision
P3 S-1	Sept 2024	KP	Part 10 Planning Application

Issues & Revisions



Carthy Mills,
Carthy Road
Dublin 6,
D06 Y0E3
T: +353 (0)1 498 7000
W: www.reddyarchitecture.com
E: info@reddyarchitecture.com

Applicant Details:
Dún Laoghaire-Rathdown County Council

Agent Details:
Land Development Agency

Project Details:
**Proposed Part 10 Residential Development,
Dundrum Central Development,
Dundrum Road,
Dublin 14**

Drawing Title:
Block 05, Typologies 01

Job No.: **P19-233D** Sheet Size: **A1_Landscape** Scale @A1: **As indicated**

Issue Date: **Sept 2024** Drawn By: **K. Potocka** Reviewed By: **R. Quinn**

Status: **P3** Purpose of Issue: **Part 10 Planning Application**

Project - System - Spatial Zone - Level - Type - Originator - Role - Number Revision
DCD-02-B05-ZZZ-DR-RAU-AR-1520 P3 S-1